

Boathouses and Docks

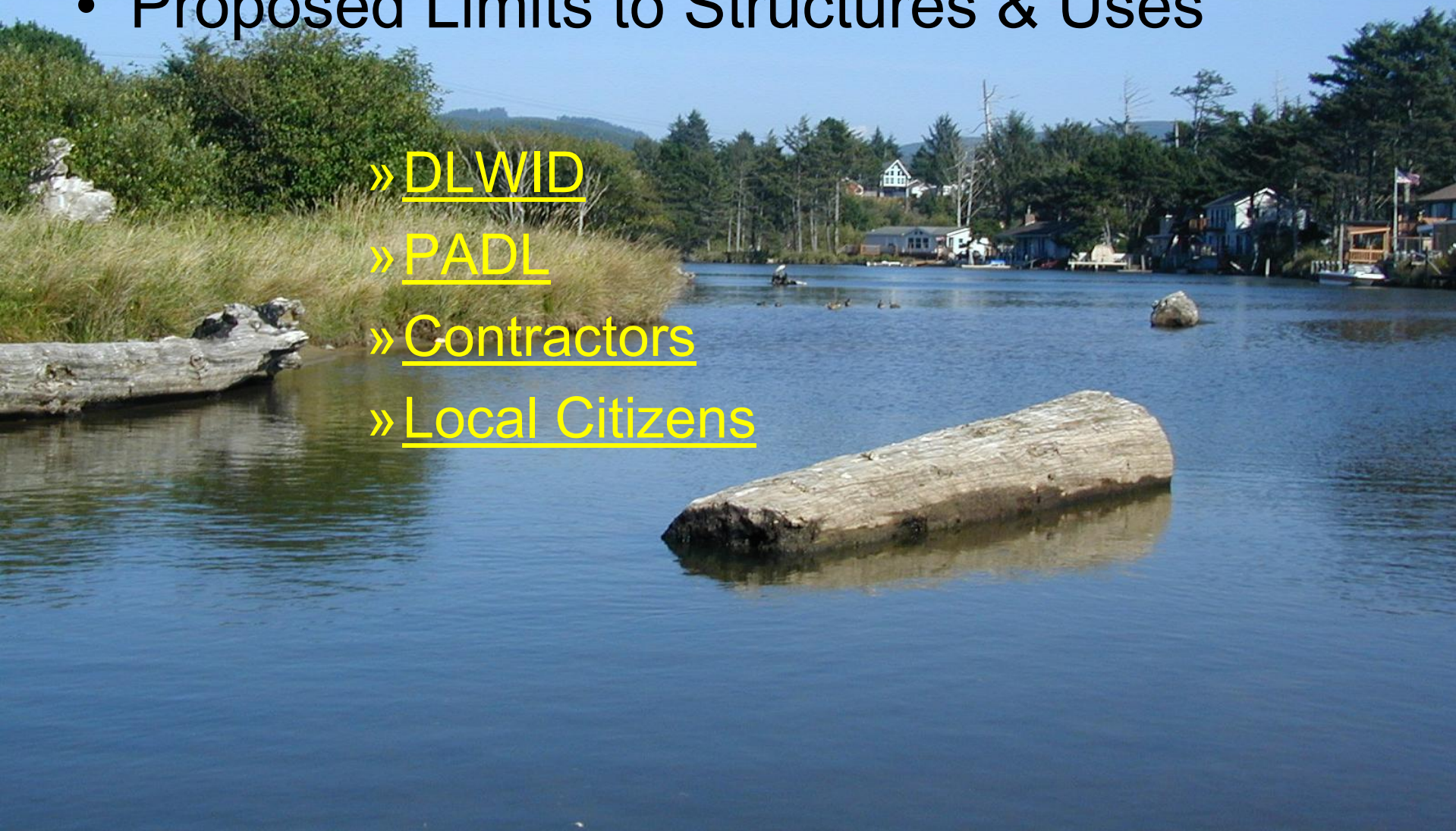
- Proposed Limits to Structures & Uses

» DLWID

» PADL

» Contractors

» Local Citizens





Where Can I build a Dock or Boathouse on Devils Lake?

- On private property or by leasing land from the state.
- The state owns the lake bed up to the normal high water mark---10.4 feet for Devils Lake.
- You can apply to Oregon's Department of State Lands to lease land under the lake.
- Leases generally cost \$25/year, paid 5 years in advance.

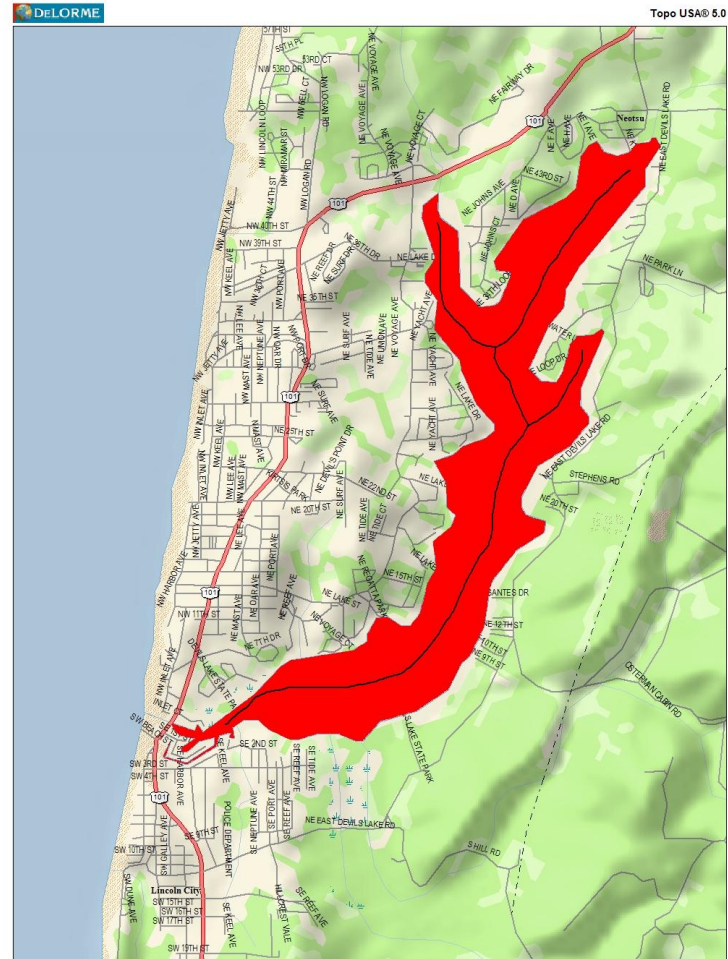


What land can I lease?

- Leased land is allocated from the lake bed on land generally in front of an upland property.
- This area is delineated by parallel imaginary property lines extended from the length of the owned shoreline.
- Imaginary property extensions intersect perpendicularly into the center line of the lake, most associated with the upland property known as the “Thread of the Stream”.

“Thread of the Stream”

- Threads are equidistance from opposing shorelines.
- Threads run parallel to shorelines.
- Lakes can have multiple “Threads”.



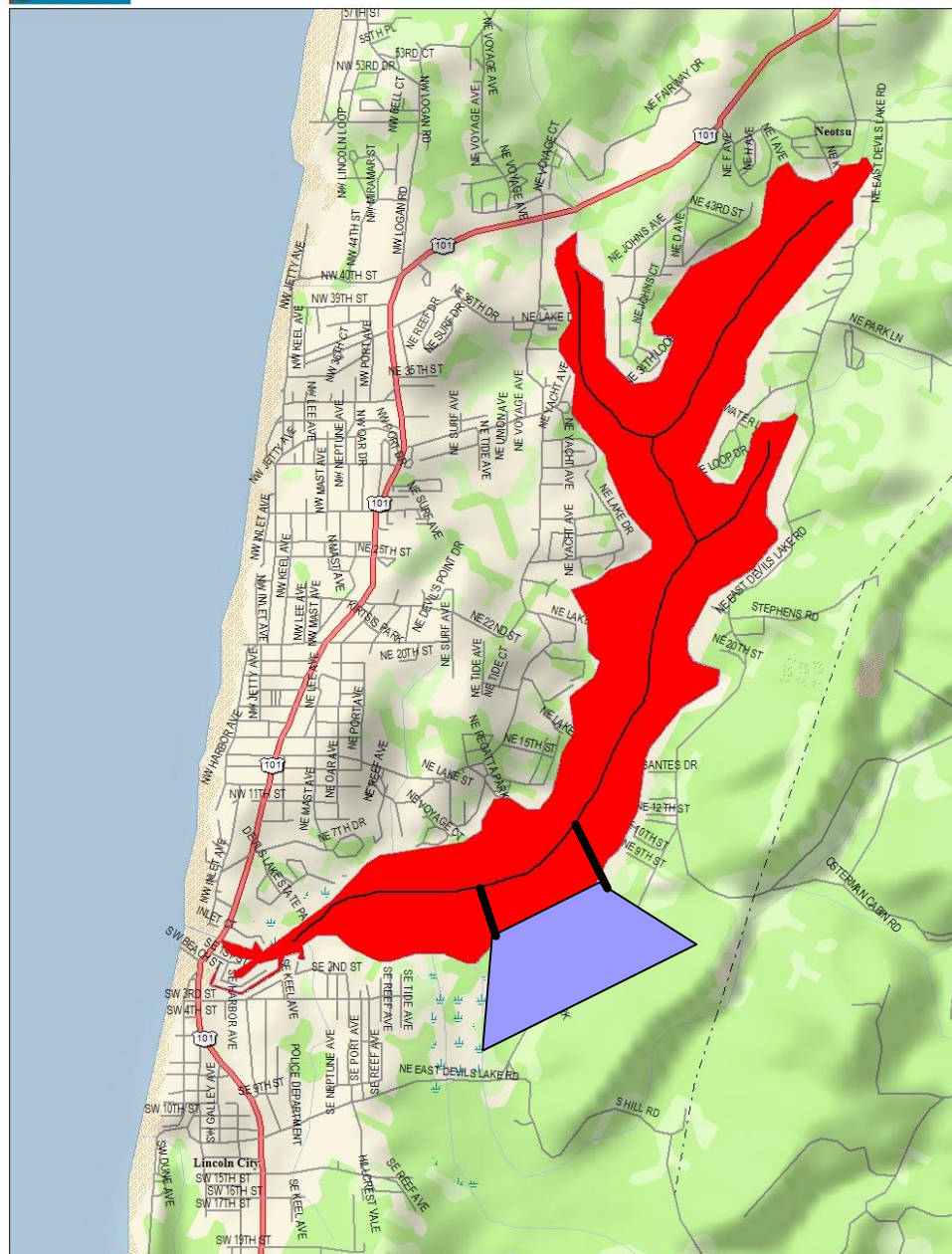
Data use subject to license.
© 2004 DeLorme. Topo USA® 5.0.
www.delorme.com

MN (0° W)

0 200 400 600 800 1000 m
Data Zoom 13-1

Sample Delineation

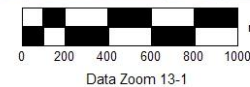
- Width is dictated by owned shoreline length.
- Imaginary lines extend from shoreline.
- Extensions are parallel and intersect the “Thread of the Stream” perpendicularly.



Data use subject to license.

© 2004 DeLorme. Topo USA® 5.0.

www.delorme.com

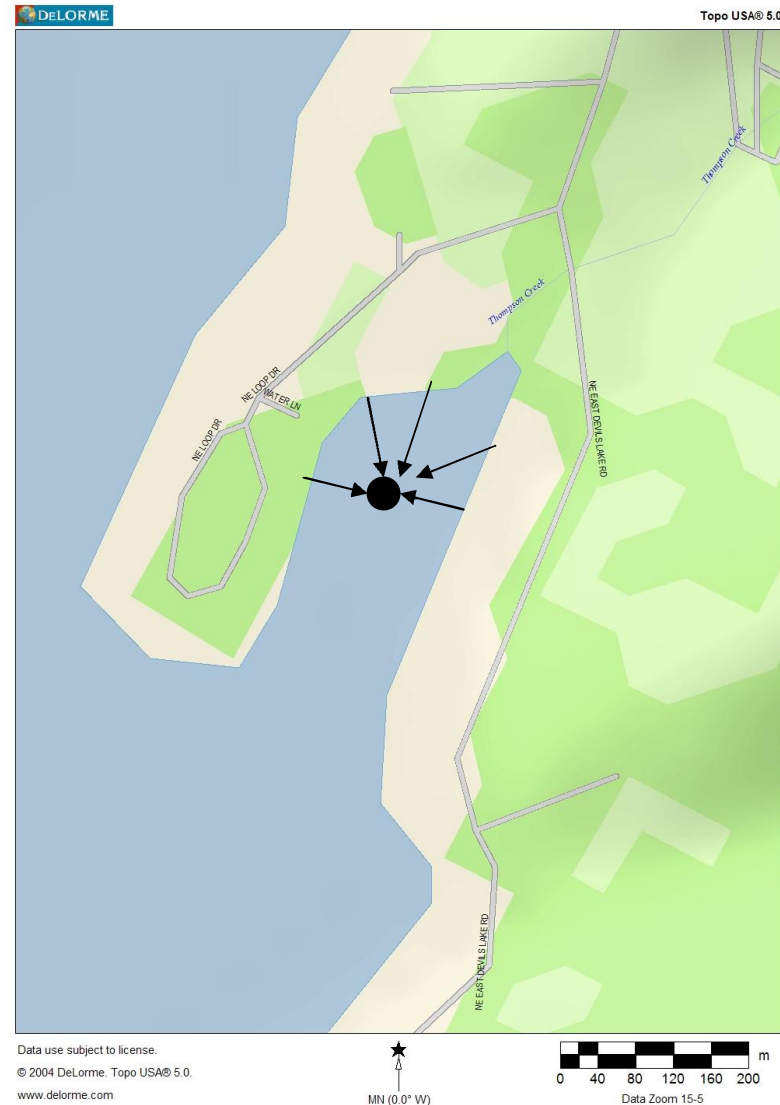


Data Zoom 13-1

Special Cases

Coves & Bays

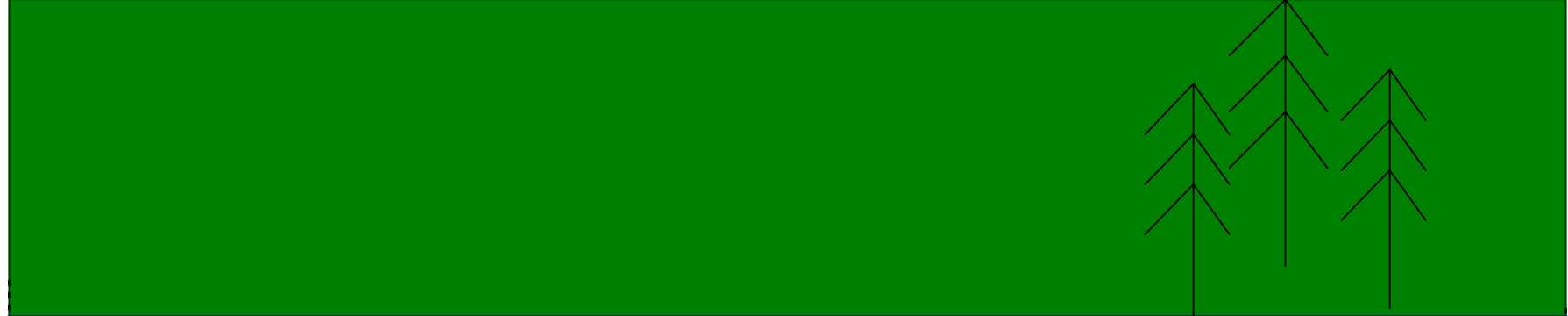
- Pie Shaped Property Line Extensions to a Center point



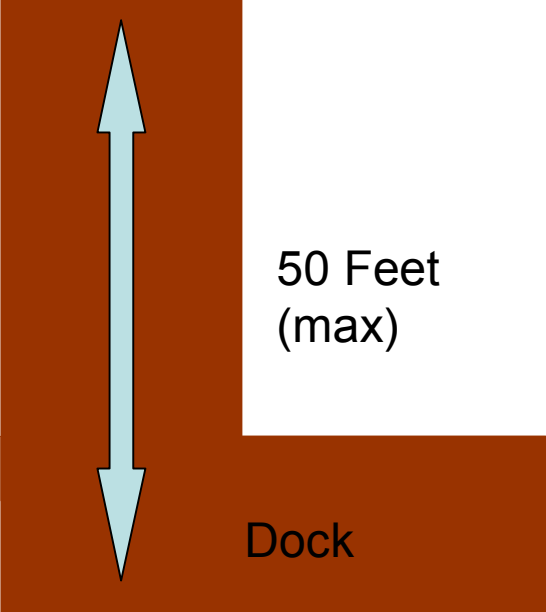
What about size and shape of my Boathouse or dock?

- The proposed changes:
 - Allow sensible dock and boathouse construction
 - Protect neighbors with setbacks
 - Protect views with height limits
 - Fairly share the resource with size limits

The Following Slides Reflect the Ordinance Changes



Normal High Water
Mark 10.4'



50 Feet
(max)

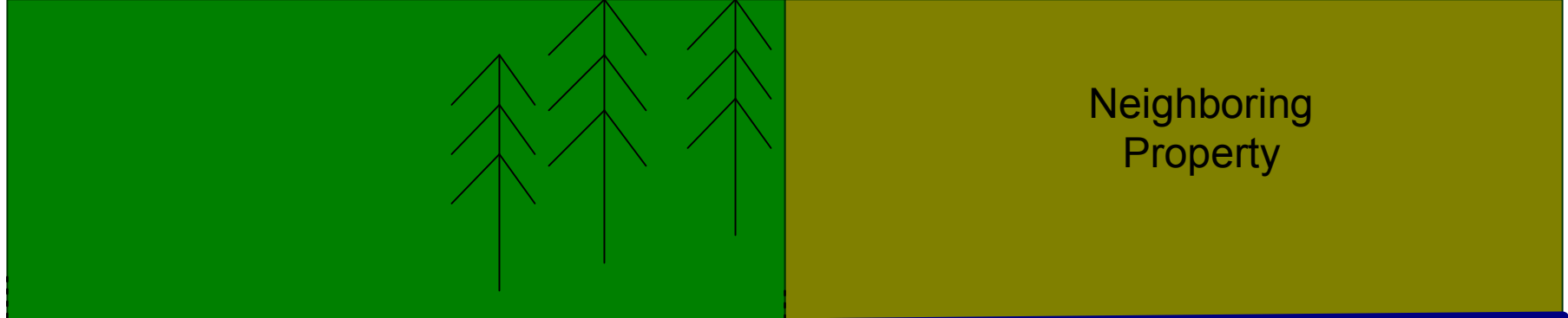
Dock

5 feet
(min)

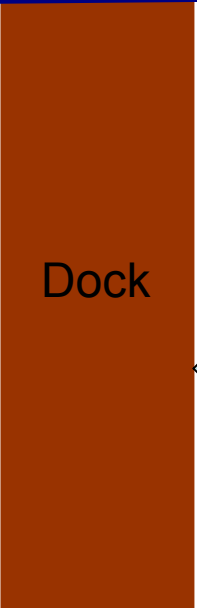
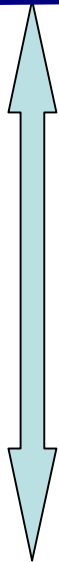
25% Shoreline (max)

Extended
Lot Lines

Total Coverage not to exceed 400 ft²



50 Feet
(max)



Dock



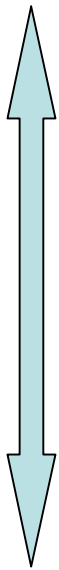
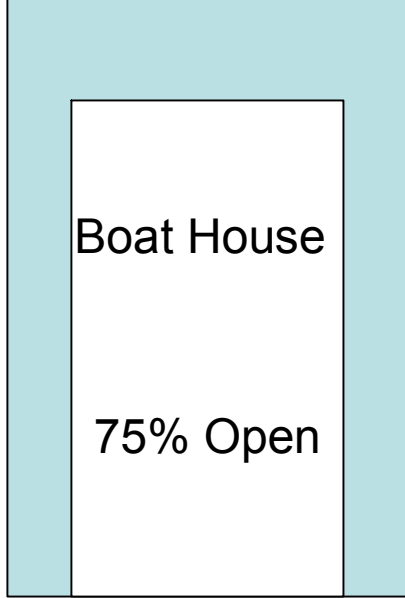
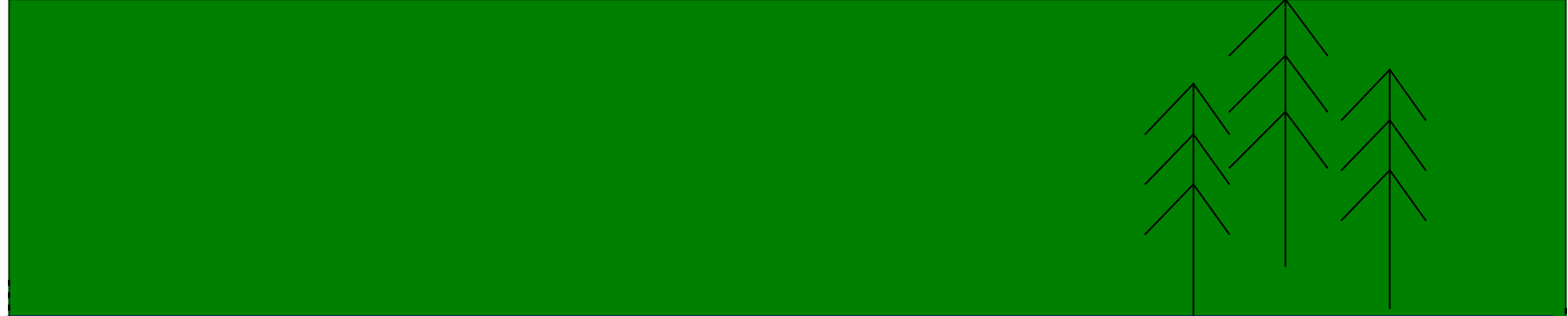
25%

Minimum Setbacks from
Neighboring Property of
25% Shoreline or 5 feet
which ever is less.



25% Shoreline (max)

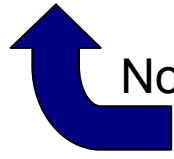
Small & Irregular Properties



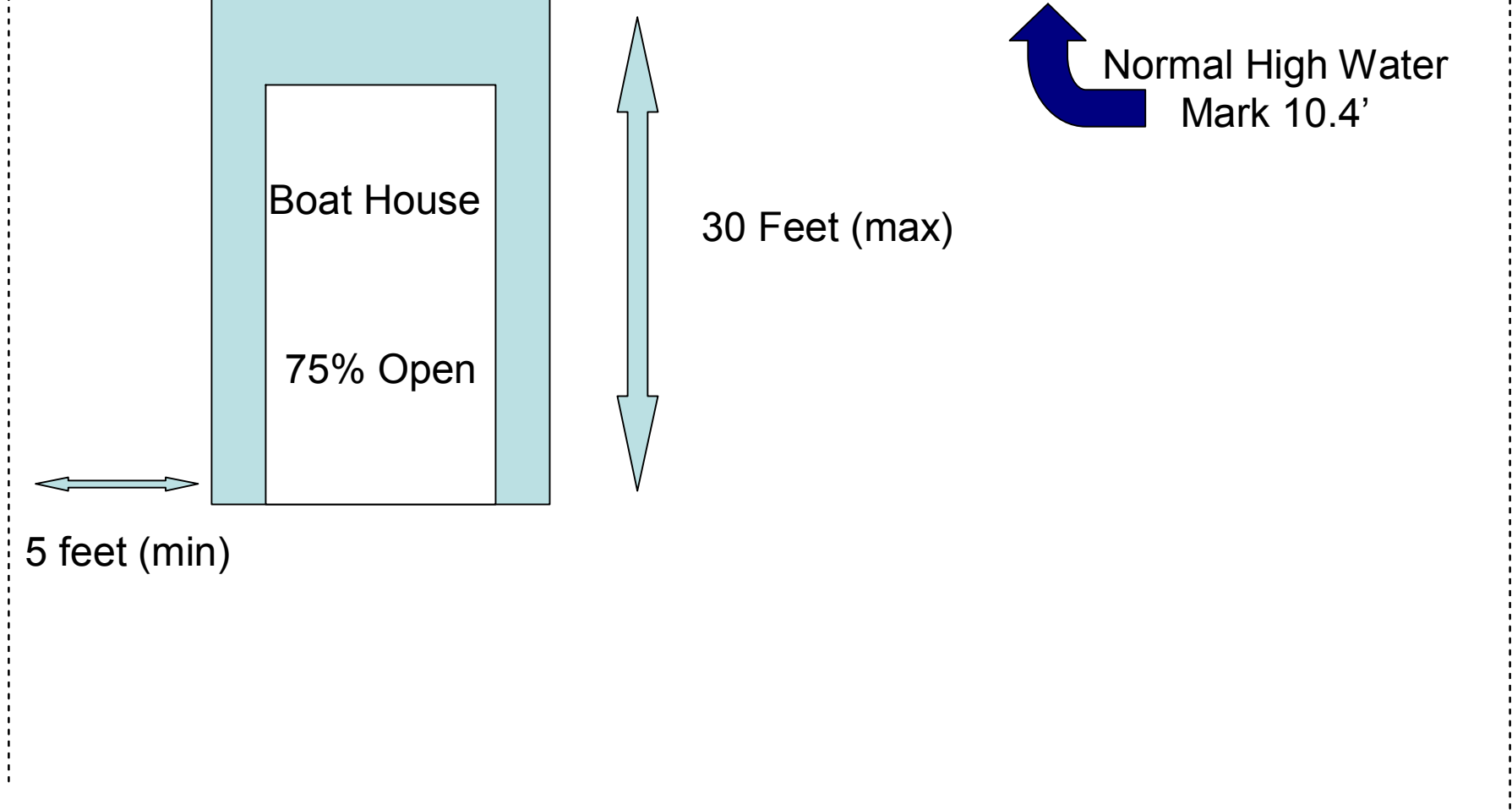
30 Feet (max)



5 feet (min)



Normal High Water
Mark 10.4'



400 ft² (maximum total square footage of docks & boathouses)

Boathouse 75% Open to water



Maximum
Height
12 Feet

Floor or Decking

12"-18" to Water

High Water = 10.4' for Devils Lake

Where can I see the actual proposed ordinance?

- Online: www.devilslakeor.us

- In Person:
 - Visit the DLWID office above Radio Shack
 - 820 SE Hwy 101, Suite D, Lincoln City

Copies available on the table in the hall.



Questions?

Comments?

Call

Devils Lake

Water Improvement District

(541) 994-5330

Or Write

Email: paul@DLWID.org